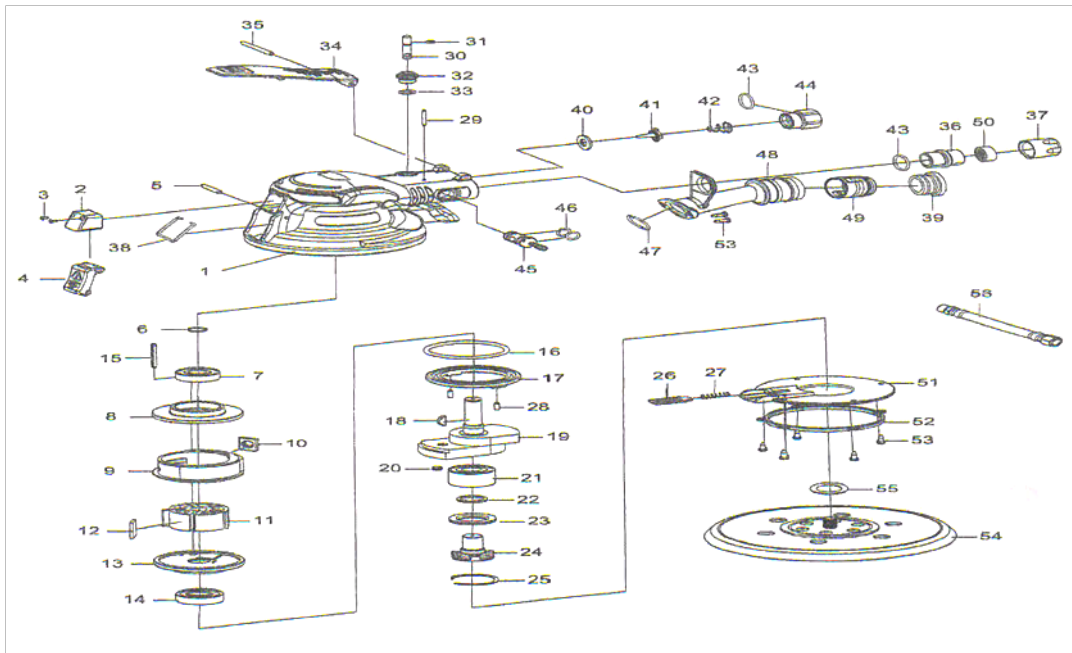




## RT 1387 AC5 - PALM SANDER



| SI.NO | PART NO        | DESCRIPTION          | QTY | SI.NO | PART NO        | DESCRIPTION                          | QTY |
|-------|----------------|----------------------|-----|-------|----------------|--------------------------------------|-----|
| 1     | SRT 1387AC5-01 | HOUSING ASSEMBLY     | 1   | 30    | SRT 1387AC5-30 | AIR ADJUSTMENT SHAFT                 | 1   |
| 2     | SRT 1387AC5-02 | BLOCK                | 1   | 31    | SRT 1387AC5-31 | O - RING                             | 1   |
| 3     | SRT 1387AC5-03 | SCREW                | 2   | 32    | SRT 1387AC5-32 | SHAFT BUSHING                        | 1   |
| 4     | SRT 1387AC5-04 | DISK RELEASE BUTTON  | 1   | 33    | SRT 1387AC5-33 | O - RING                             | 1   |
| 5     | SRT 1387AC5-05 | THROTTLE LEVER PIN   | 1   | 34    | SRT 1387AC5-34 | THROTTLE LEVER                       | 1   |
| 6     | SRT 1387AC5-06 | RETAINER RING        | 1   | 35    | SRT 1387AC5-35 | SPRING PIN                           | 1   |
| 7     | SRT 1387AC5-07 | BALL BEARING         | 1   | 36    | SRT 1387AC5-36 | OUTLET BUSHING                       | 1   |
| 8     | SRT 1387AC5-08 | CYLINDER UPPER COVER | 1   | 37    | SRT 1387AC5-37 | MUFFLER CAP                          | 1   |
| 9     | SRT 1387AC5-09 | CYLINDER             | 1   | 38    | SRT 1387AC5-38 | SAFETY BUCKLE                        | 1   |
| 10    | SRT 1387AC5-10 | WASHER               | 1   | 39    | SRT 1387AC5-39 | COVER                                | 1   |
| 11    | SRT 1387AC5-11 | ROTOR                | 1   | 40    | SRT 1387AC5-40 | PU WASHER                            | 1   |
| 12    | SRT 1387AC5-12 | ROTOR BLADE          | 5   | 41    | SRT 1387AC5-41 | AIR INLET SHAFT                      | 1   |
| 13    | SRT 1387AC5-13 | CYLINDER LOWER COVER | 1   | 42    | SRT 1387AC5-42 | VALVE SPRING                         | 1   |
| 14    | SRT 1387AC5-14 | BALL BEARING         | 1   | 43    | SRT 1387AC5-43 | O - RING                             | 2   |
| 15    | SRT 1387AC5-15 | SPRING PIN           | 1   | 44    | SRT 1387AC5-44 | AIR INLET                            | 1   |
| 16    | SRT 1387AC5-16 | O - RING             | 1   | 45    | SRT 1387AC5-45 | EXHAUST ADJUSTMENT SHAFT             | 1   |
| 17    | SRT 1387AC5-17 | LOCK NUT             | 1   | 46    | SRT 1387AC5-46 | O - RING                             | 2   |
| 18    | SRT 1387AC5-18 | KEY                  | 1   | 47    | SRT 1387AC5-47 | O - RING                             | 1   |
| 19    | SRT 1387AC5-19 | SPINDLE              | 1   | 48    | SRT 1387AC5-48 | DUST COLLECTION TUBE FOR SELF VACCUM | 1   |
| 20    | SRT 1387AC5-20 | BALANCER             | 3   | 49    | SRT 1387AC5-49 | RECOLVE TUBE                         | 1   |
| 21    | SRT 1387AC5-21 | BALL BEARING         | 1   | 50    | SRT 1387AC5-50 | EXHAUST DEFLECTOR                    | 1   |
| 22    | SRT 1387AC5-22 | BEARING SEAL         | 1   | 51    | SRT 1387AC5-51 | DUST PROTECTION COVER                | 1   |
| 23    | SRT 1387AC5-23 | WASHER               | 1   | 52    | SRT 1387AC5-52 | DUST PROTECTION RING                 | 1   |
| 24    | SRT 1387AC5-24 | BALANCER SHAFT       | 1   | 53    | SRT 1387AC5-53 | SCREW                                | 7   |
| 25    | SRT 1387AC5-25 | RETAINER RING        | 1   | 54    | SRT 1387AC5-54 | PAD 5 "                              | 1   |
| 26    | SRT 1387AC5-26 | DISK RELEASE STOPPER | 1   | 55    | SRT 1387AC5-55 | WASHER                               | 1   |
| 27    | SRT 1387AC5-27 | SPRING               | 1   | 56    | SRT 1387AC5-58 | EXTENSION TUBE                       | 1   |
| 28    | SRT 1387AC5-28 | SCREW                | 2   |       |                |                                      |     |
| 29    | SRT 1387AC5-29 | SPRING PIN           | 1   |       |                |                                      |     |

**RAMSIVE TOOLS PVT.LTD.**

S.F.No:412, Tex park Road, Nehru Nagar, SITRA, Coimbatore-641014.

Phone: 91-422-2905003 - Mobile: 9047023253.