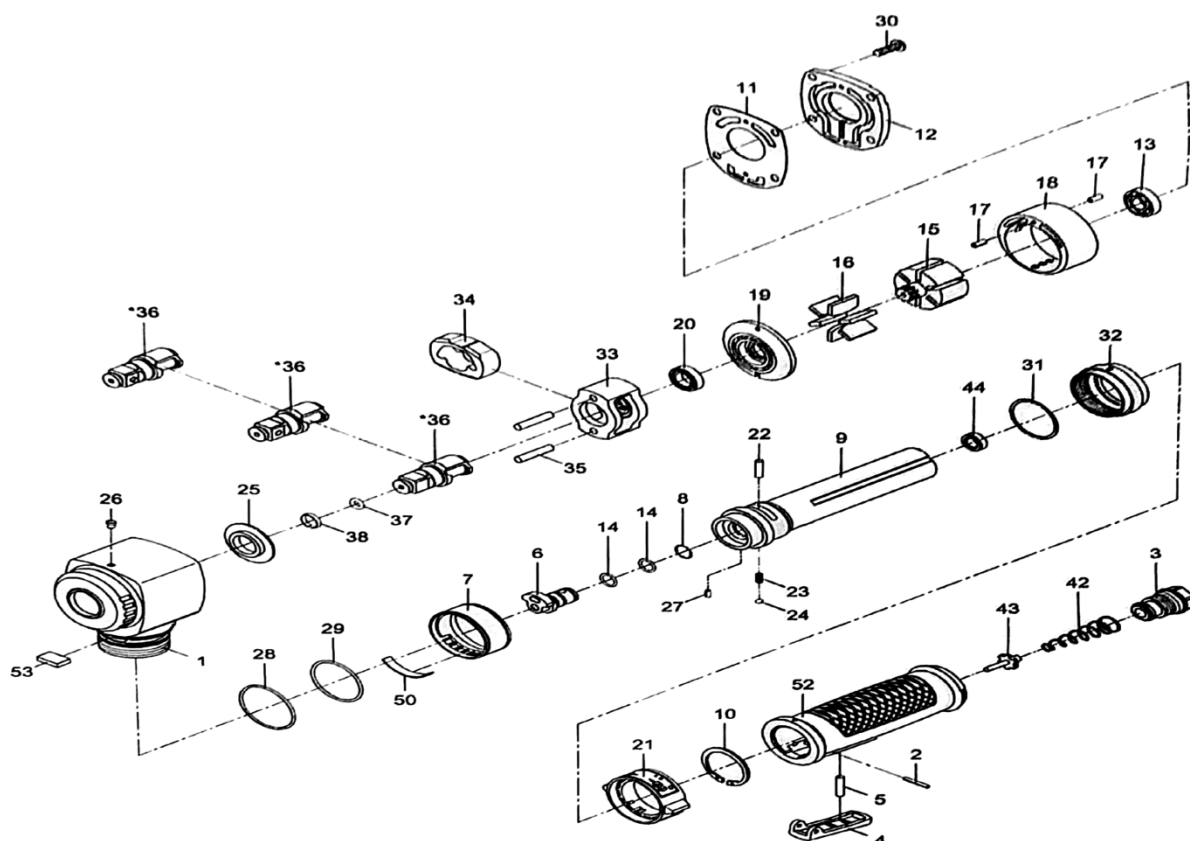




RT 43-4010 - 1/2" ANGLE IMPACT WRENCH



SI.NO	PART NO	DESCRIPTION	QTY	SI.NO	PART NO	DESCRIPTION	QTY
1	SRT 43-4010-01	MOTOR HOUSING	1	24	SRT 43-4010-24	STEEL BALL (1/8")	1
2	SRT 43-4010-02	SPRING PIN (2.5x20)	1	25	SRT 43-4010-25	ANVIL BUSHING	1
3	SRT 43-4010-03	AIR INLET	1	26	SRT 43-4010-26	OIL CAP (1/8")	1
4	SRT 43-4010-04	THROTTLE LEVER	1	27	SRT 43-4010-27	SPRING PIN (2 x 4)	1
5	SRT 43-4010-05	PIN	1	28	SRT 43-4010-28	O - RING (37.8 x 1.6)	1
6	SRT 43-4010-06	REVERSE VALVE	1	29	SRT 43-4010-29	O - RING (34.65 x 1.78)	1
7	SRT 43-4010-07	EXHAUST DIFFUSER	1	30	SRT 43-4010-30	SCREW	4
8	SRT 43-4010-08	O - RING (10 x 1)	1	31	SRT 43-4010-31	WASHER	1
9	SRT 43-4010-09	HANDLE	1	32	SRT 43-4010-32	CLAMP NUT	1
10	SRT 43-4010-10	INVERTED RETAINING RING	1	33	SRT 43-4010-33	HAMMER CAGE	1
11	SRT 43-4010-11	GASKET	1	34	SRT 43-4010-34	HAMMER	1
12	SRT 43-4010-12	REAR COVER	1	35	SRT 43-4010-35	HAMMER PIN (5.1 x 25)	2
13	SRT 43-4010-13	BALL BEARING	1	36	SRT 43-4010-36	ANVIL (R-TYPE 1/2")	1
14	SRT 43-4010-14	O - RING (9.5 x 1.5)	2			ANVIL (RH-TYPE 1/2")	1
15	SRT 43-4010-15	ROTOR	1			ANVIL (M-TYPE 1/2")	1
16	SRT 43-4010-16	ROTOR BLADE	6	37	SRT 43-4010-37	O - RING (6.5 x 2)	1
17	SRT 43-4010-17	SPRING PIN (2.5x5)	2	38	SRT 43-4010-38	RETAINING RING	1
18	SRT 43-4010-18	CYLINDER	1	42	SRT 43-4010-42	VALVE SPRING	1
19	SRT 43-4010-19	FRONT END PLATE	1	43	SRT 43-4010-43	VALVE STEM	1
20	SRT 43-4010-20	BALL BEARING (6801)	1	44	SRT 43-4010-44	RUBBER SPACER	1
21	SRT 43-4010-21	REVERSE VALVE KNOB	1	50	SRT 43-4010-50	MUFFLER MATERIAL	1
22	SRT 43-4010-22	PIN (4 x 15.8)	1	52	SRT 43-4010-52	PLASTIC BODY	1
23	SRT 43-4010-23	SPRING	1	53	SRT 43-4010-53	MUFFLER MATERIAL	1

RAMSIVE TOOLS PVT.LTD.

S.F.No:412, Tex park Road, Nehru Nagar, SITRA, Coimbatore-641014.

Phone: 91-422-2905003 - Mobile: 9047023253.