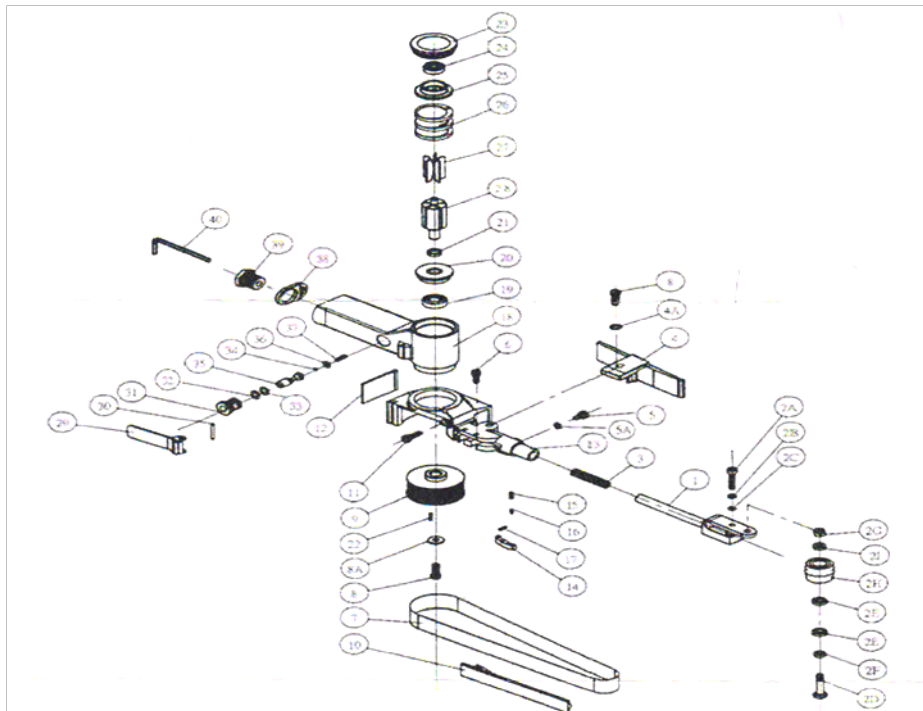




## RT 9620 – BELT SANDER



| SI.NO | PART NO     | DESCRIPTION              | QTY   | SI.NO | PART NO     | DESCRIPTION       | QTY |
|-------|-------------|--------------------------|-------|-------|-------------|-------------------|-----|
| 1     | SRT 9620-01 | TENSION BAR 10           | 1     | 28    | SRT 9620-15 | SPRING            | 1   |
| 2     | SRT 9620-02 | IDEL PULLEY ASSEMBLY     | 1 set | 29    | SRT 9620-16 | LEVER PIN         | 1   |
| 3     | SRT 9620-2A | HEXAGON SOCKET HEAD BOLT | 1     | 30    | SRT 9620-17 | LEVER PIN         | 1   |
| 4     | SRT 9620-2B | WASHER                   | 1     | 31    | SRT 9620-18 | HOUSING           | 1   |
| 5     | SRT 9620-2C | E -CLIPPER               | 1     | 32    | SRT 9620-19 | BALL BEARING      | 1   |
| 6     | SRT 9620-2D | IDLE PULLEY SHAFT        | 1     | 33    | SRT 9620-20 | END PLATE A       | 1   |
| 7     | SRT 9620-2E | BALL BEARING             | 2     | 34    | SRT 9620-21 | SAPCER            | 1   |
| 8     | SRT 9620-2F | WASHER                   | 1     | 35    | SRT 9620-22 | SUNK KEY          | 1   |
| 9     | SRT 9620-2G | HEXAGON NUT              | 1     | 36    | SRT 9620-23 | CAP               | 1   |
| 10    | SRT 9620-2H | IDEL PULLEY              | 1     | 37    | SRT 9620-24 | BALL BEARING      | 1   |
| 11    | SRT 9620-2I | WASHER                   | 1     | 38    | SRT 9620-25 | END PLATE A       | 1   |
| 12    | SRT 9620-03 | SPRING                   | 1     | 39    | SRT 9620-26 | CYLINDER          | 1   |
| 13    | SRT 9620-04 | FINGER PAD ASSEMBLY      | 1     | 40    | SRT 9620-27 | BLADE ASSEMBLY    | 5   |
| 14    | SRT 9620-4A | TOOTHED LOCK WASHER      | 1     | 41    | SRT 9620-28 | ROTOR             | 1   |
| 15    | SRT 9620-05 | HEXAGON SOCKET HEAD BOLT | 1     | 42    | SRT 9620-29 | THROTTLE LEVER    | 1   |
| 16    | SRT 9620-5A | CUP SPRING               | 1     | 43    | SRT 9620-30 | LEVER PIN         | 1   |
| 17    | SRT 9620-06 | HEXAGON SOCKET HEAD BOLT | 1     | 44    | SRT 9620-31 | VALVE BODY        | 1   |
| 18    | SRT 9620-07 | CRINDING BELT            | 2     | 45    | SRT 9620-32 | O - RING          | 1   |
| 19    | SRT 9620-7A | CRINDING BELT            | 1     | 46    | SRT 9620-33 | O - RING          | 1   |
| 20    | SRT 9620-08 | HEXAGON SOCKET HEAD BOLT | 1     | 47    | SRT 9620-34 | O - RING          | 1   |
| 21    | SRT 9620-8A | WASHER                   | 1     | 48    | SRT 9620-35 | VALVE STEM        | 1   |
| 22    | SRT 9620-09 | DRIVE PULLEY             | 1     | 49    | SRT 9620-36 | O - RING          | 1   |
| 23    | SRT 9620-10 | FLAT SHOE                | 1     | 50    | SRT 9620-37 | VALVE SPRING      | 1   |
| 24    | SRT 9620-11 | HEXAGON SOCKET HEAD BOLT | 1     | 51    | SRT 9620-38 | DEFRECTOR         | 1   |
| 25    | SRT 9620-12 | DUST COVER               | 1     | 52    | SRT 9620-39 | AIR INLET         | 1   |
| 26    | SRT 9620-13 | GUARD BODY               | 1     | 53    | SRT 9620-40 | HEXAGO WRENCH KEY | 1   |
| 27    | SRT 9620-14 | TENSION BAR              | 1     |       |             |                   |     |

**RAMSIVE TOOLS PVT.LTD.**

S.F.No:412, Tex park Road, Nehru Nagar, SITRA, Coimbatore-641014.

Phone: 91-422-2905003 - Mobile: 9047023253.